



# NURSING HOMES MORANGIS, FRANCE

## 莫朗吉养老院

VOUS ETES ICI建筑事务所 | VOUS ETES ICI Architectes 收稿日期：2013-12-20

翻译：李媛 | Translated by Li Yuan

项目名称：莫朗吉养老院

业 主：Immodieze and AXENTIA for the Conseil  
General du 91

建设地点：法国莫朗吉市

设计单位：VOUS ETES ICI Architectes

用地面积：9 950 m<sup>2</sup>

建筑面积：5 315 m<sup>2</sup>

建筑层数：4层

材 料：西伯利亚落叶松木

建筑设计：A.Becker, J.Paulré, P.Pflughaupt

设备设计：Facea

景观设计：Lecarpentier

声学设计：Cap Horn

承 包 商：Dumez Idf

设计时间：2010年

建成时间：2013年

图纸版权：VOUS ETES ICI Architectes

摄 影：11H45

## 面向所有人的养老院

基于由社会承包商AXENTIA和私人开发商Immodieze的期房概念，莫朗吉养老院的建设获得了埃松省总理会的财政支持以及地方卫生机构和莫朗吉市的地区支持。

一家拥有自主权的公共机构是这座新建筑的承租者和运营商，它为每位租户设定的日租金低至60欧元。但如此低廉且大众化的水平，并没有以牺牲服务质量和建筑装修为代价。

## 具有导向性的建筑

这座4层建筑的平面为“Y”字形，主要公共入口设置于Y的两翼交汇处；北侧设有服务、物品运输和员工出入口；南侧立面则面向每位住户的私家花园高度开放。

平面布局遵循着紧凑、理性并向室外空间开放的原则。

起居室和主要活动区域（餐厅、沙龙）围绕私家花园布置，既享有优美的景色，也方便出入花园。花园中设有治愈主题空间以及围绕花坛和玫瑰花园的传统小路。

二层和三层的房间供普通老年人居住。这些房间被分为六个单元，每个单元包括13个房间。

四层安排阿兹海默症患者和其他患有神经障碍类疾病的患者居住。为此，该层设置了供特殊活动、休息和康复的专用大空间。

“Y”的中心节点连接着建筑的所有功能区和患者居住单元，由此可通往所有楼层。

## 供人人享有的风景和日光

项目要追求的设计目标之一是为整栋建筑和所有睡眠单元提供框景的视野。每个单元都设有一个用于活动和就餐的主要聚会空间以及一个设置在门廊或空中花园前的小型空间。所有这些小空间都通过玻璃窗享有优美的景色。

通常幽暗憋闷的走廊设有宽敞且享有对外视野的空间，使老年人可以在各自居所和阳光充足之地及公共休息区之间漫步。与同伴碰面、聊天，而不会有寻路的困难和压力。四层设有两个便于老人到达的大露台，作为室内空间的延伸朝向私家花园。

单从视野的角度而言，每个房间设计得不尽相同，因为通过每个房间的窗户会欣赏到外面田园风光，与其说这里是医院的病房倒不如说是宾馆的客房。房间内都采用落地窗，使卧床的老人也能看到窗外的景色。

## 材料与体量

承载了不同空间的独特体量散发着和而不同的韵味。

在包裹着建筑的外表皮上有一些不对称的开口。这一具有雕塑感的立面为室内的人们提供了多样的视角和丰富的空间。

外表皮由西伯利亚落叶松木制成，带给人们温暖而舒适的感觉，而且会随着太阳和一天时间的变化振动。落叶松木板属高端实木，相互对接可防止变形和移除缺陷。

从立面表皮延伸而出的远离建筑的木质遮阳篷，既起到了遮阳避雨的作用，又为一层的沙龙和餐厅提供庇护。外表皮的每一处向内凹进都对应着一个专门的社交空间，一面向私家花园或四层露台敞开的室内休息区。凹进可以使阳光入射到那些行动不便的老人的房间深处。每每体量发生变化之处，外表皮都会采用不同的材料和色彩加以强调。黄色外墙配以橙色更突显了光线的温暖，气氛温馨而友好，黄色与木材自然温暖的感觉相得益彰。

遮阳篷下立面上以及卧室内的门窗框饰以明快而活泼的颜色，既令人兴奋又不至于刺激。当人们走近建筑，在遮阳篷下向黄色外墙穿行时，会感受到建筑的亲切和谐，会很容易理解建筑如何与周围自然及城市环境融合。

因此，这一富有活力的空间值得老年人亲身体验。■

## A retirement Home for All

Based on an off-plan concept led by AXENTIA as a social contractor and IMMODIEZE as a private developer, the Morangis Retirement Home was constructed with financial support from the Conseil Général de l'Essonne, Regional support as well as the Regional Health Agency and the town of Morangis.

The operator and tenant of the new building is an Autonomous Public Establishment that offers stay's as low as 60€ per day. This low and democratic offer was attained without sacrificing the quality of service or the finish of the construction.

## An Orientated Building

The building is constructed on 4 levels and is based on a «Y» shaped plan. The building occupies the site as follows:

1The main public entrance is located where the "Y" strands connect

2The north facade is dedicated to service, deliveries and employee's entrance

3The south facade is generously opened towards the residents private parc

The plan is organized according to a few constraints: compact, rational and open towards the outside

The living areas as well as the main activities areas (restaurant, salon) are developed around the private gardens. These areas

benefit from the view and easy dedicated access to the gardens. The gardens include therapeutically themed spaces as well as more traditional paths around flower beds and a rose garden.

The rooms on floor one and two are dedicated to classical geriatrics residents, the rooms are disposed into 6 units of 13 rooms each

The third floor is dedicated to patients suffering from Alzheimer's disease or other similar neurological disorders. The floor includes vast dedicated spaces for specialized activities, rest and well-being.

All the floors are accessible from the central node intersecting all of the buildings functions and patient units.

### Views and Light for All

One of the base lines of this project is to offer, all through the construction and all its sleeping units, framed views. Each unit has a main gathering area for activities or meals as well as a smaller area placed in front of loggia or suspended gardens. All these small areas include large windows and quality framed views.

The corridors, usually blind and suffocating spaces, always include wider spaces with outside views, this allows our elders to move around at their pace towards lights and rest areas in the buildings circulations, they may easily meet and chat with fellow residents without having a difficult and stressing path to do so. The third floor has

two large terraces easily accessible to the residents. These terraces, widely orientated towards the park, are treated as a prolongation of the inner spaces.

On an individual's point of view, the building rooms were designed differently with windows offering distant views of the country side and treated as hotel rooms more than hospital rooms. The windows all designed with a glass panel to the floor allowing bedded residents to have a view.

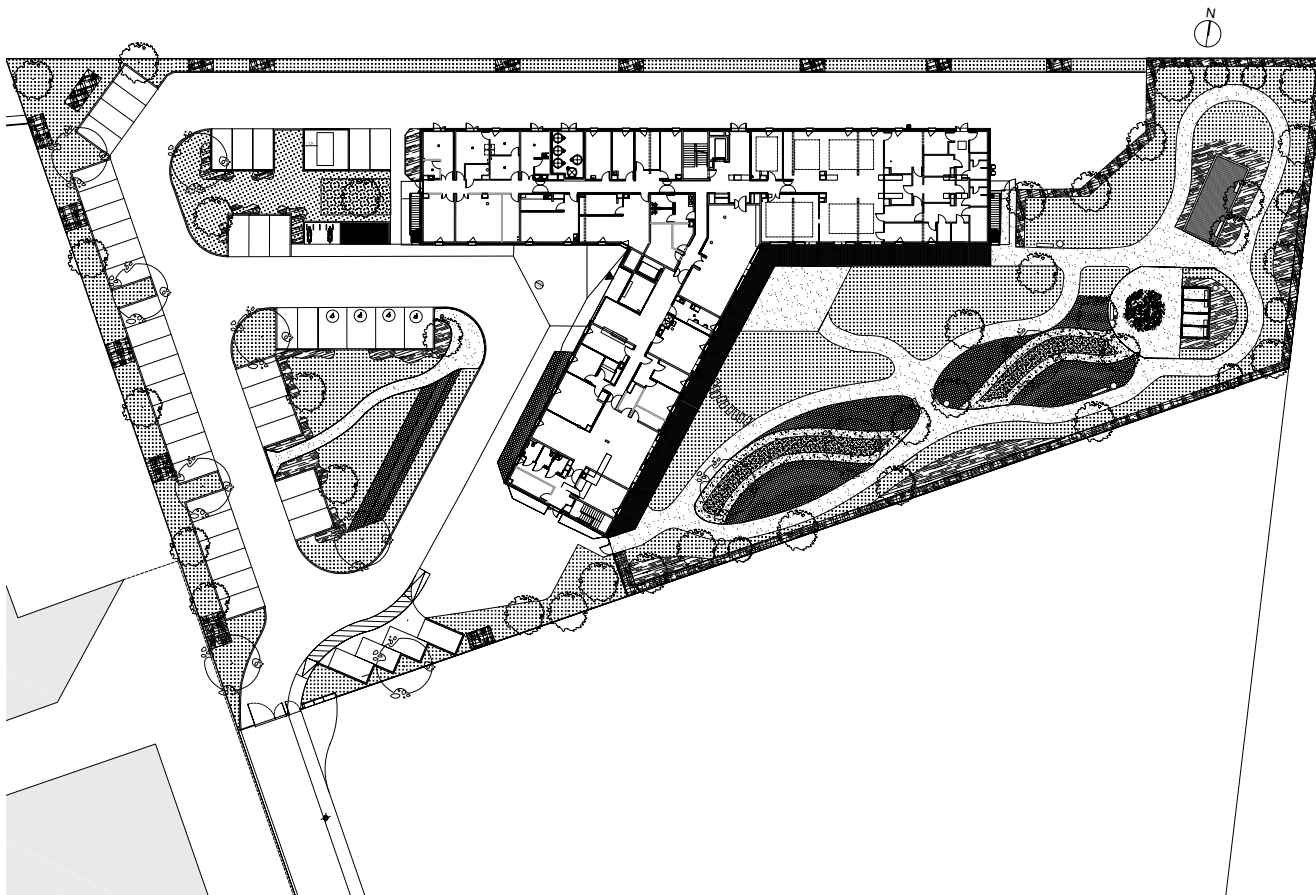
### Materials and Volumes

A unique volume with different spaces: unity is not uniformity.

On the outer skin wrapping the building, openings are pierced following no specific symmetry; the sculpted facades offer various views and volumes behind the outer skin.

This envelope covering the building is made out of Siberian larch wood; these wooden boards are warm and comforting. The outer skin vibrates according to the sun and time of the day. The larch boards are top quality solid wood, they are butted together to prevent deformation and to remove defaults.

Wooden awnings extend the facades skin away from the building creating shelter from the sun and rain and protecting the ground floor's salons and restaurants. Every time the outer skin is punched



总平面

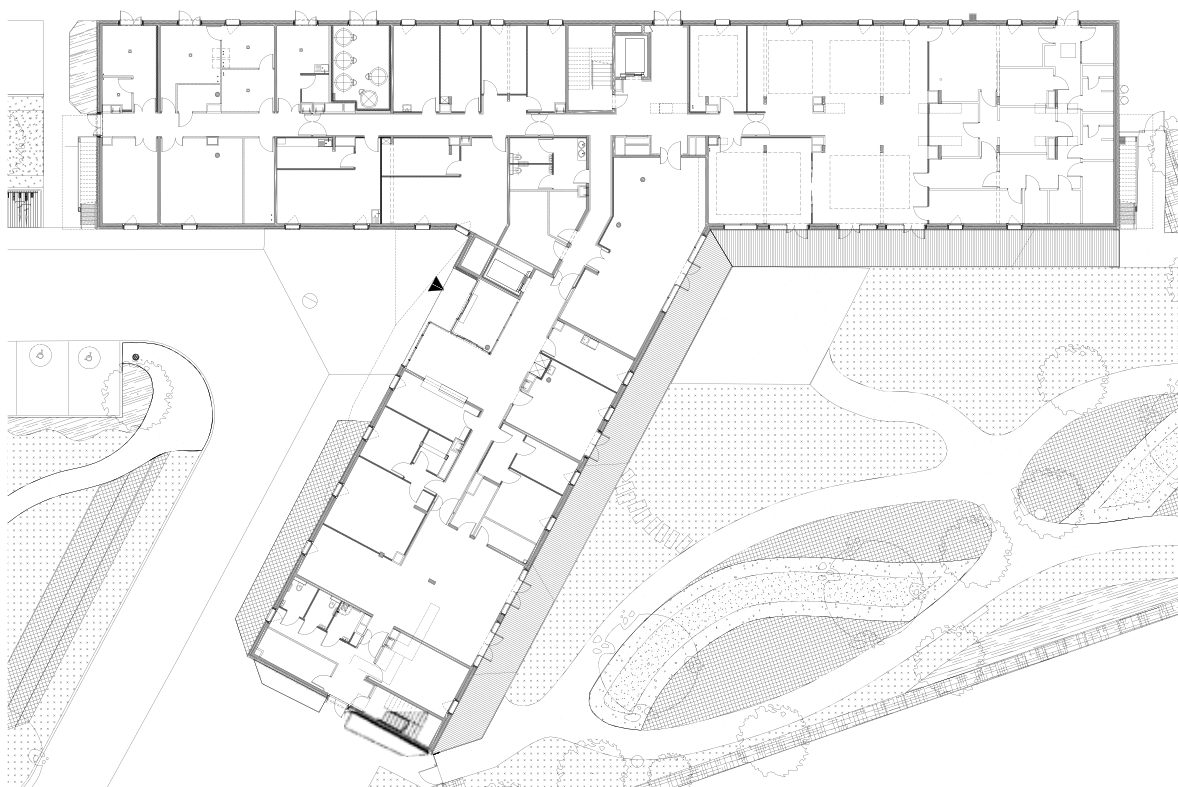








具有雕塑感的立面



一层平面



in to form a dent in the global volume this corresponds to a specific socializing space: inner rest areas widely opened towards the park or the third floors terraces. The "dents" allow the sun and the light to reach in deeply into the building for those whom have difficulties moving about. As soon as the outer skin is breached to create a volume a different material and color is used to outline these inner volumes. A warm orange to yellow coating has been applied on the outer walls exaggerating the warmth of the light. The ambiance is friendly and warm and the yellow resonates nicely with the natural warmth of wood.

This bright and lively color, stimulating without being aggressive, is also the one used for the window and door frames of the facades found under the awnings and in the bedrooms. As one approaches the building and passes below the awnings towards the yellow coating, as he is welcomed, will feel and understand the building's harmony. One will easily understand how the building works and how it is connected to its natural and urban surroundings.

As a result the dynamic spaces we offer are worth the effort needed to reach by elderly people.



不对称的开口



立面上的凹进空间



室内空间

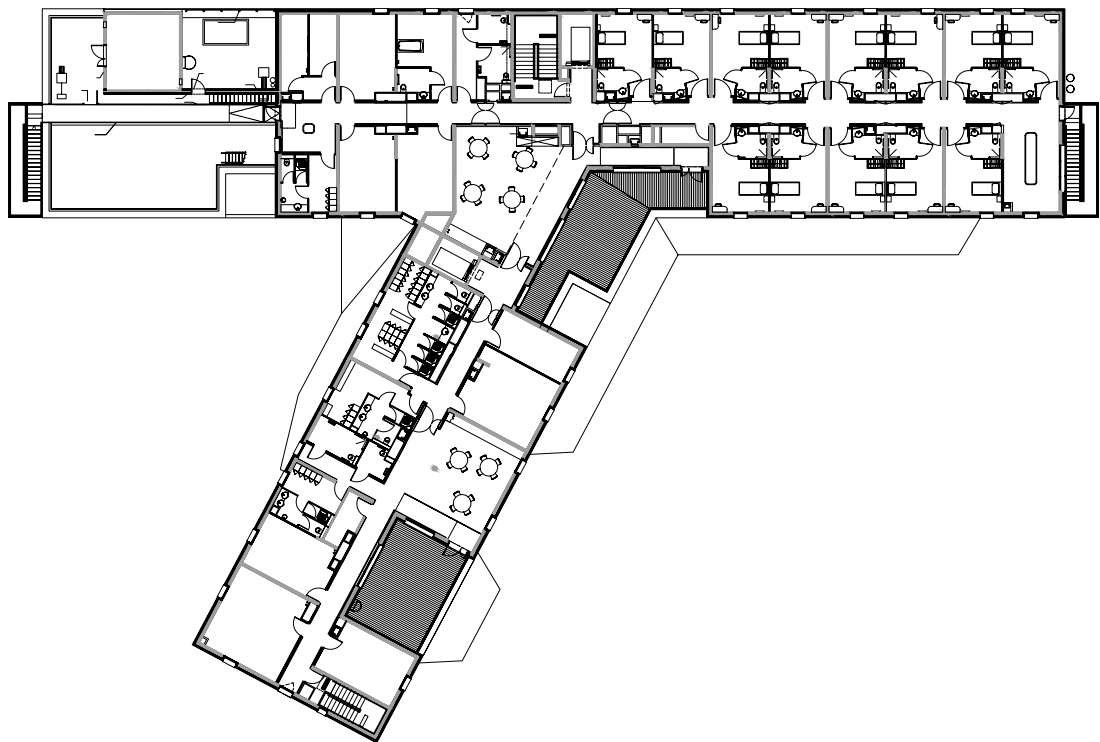


二层平面





从室内看庭院



三层平面