



World Architecture 10
Senior Living

JTart Publishing

World Architecture 10

Senior Living

By JTart

Rich Content - The selected projects include the rehabilitation centers, apartments and the nursing homes for the senior, covering almost all the aspects about senior living, namely, healthcare, nursing, tourism and so on.

Full Coverage - It collects some typical and excellent projects about senior living from cities of France, Italy, Austria, Slovenia, Japan, China and so on.

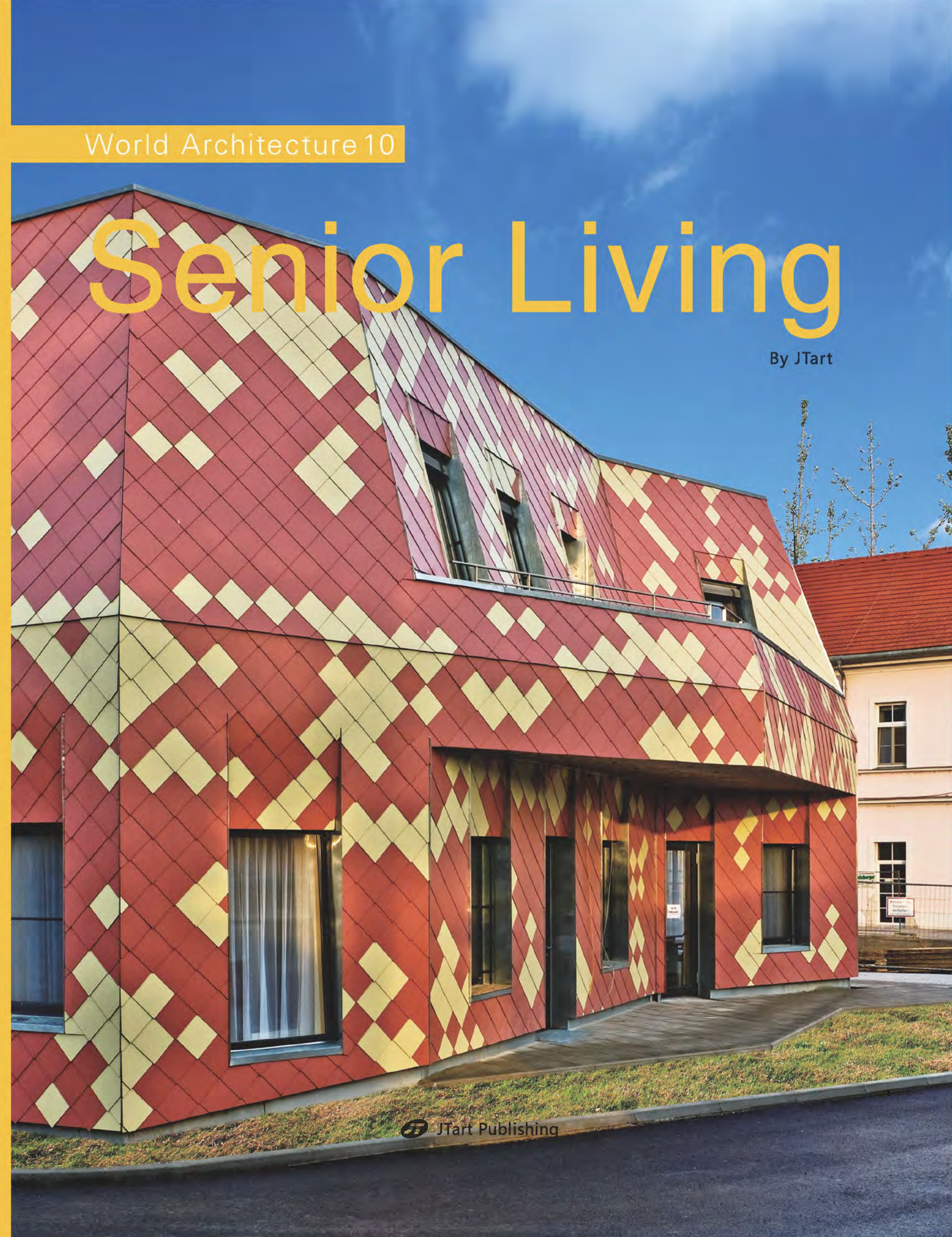
Novel Idea - With varied types of projects, it makes deep and detail analysis on the planning, design and construction of the buildings for the senior.

Comprehensive Presentation - All the cases are presented with a great quantity of professional photographs, beautiful renderings, precious drawings and detail descriptions to well explain the characteristics of buildings for the senior living clearly and easily.

ISBN 978-7-5623-3986-1



9 787562 339861



JTart Publishing

Keywords

Glass Panel Windows
Pine Wood Skin
Warm Color Ornament



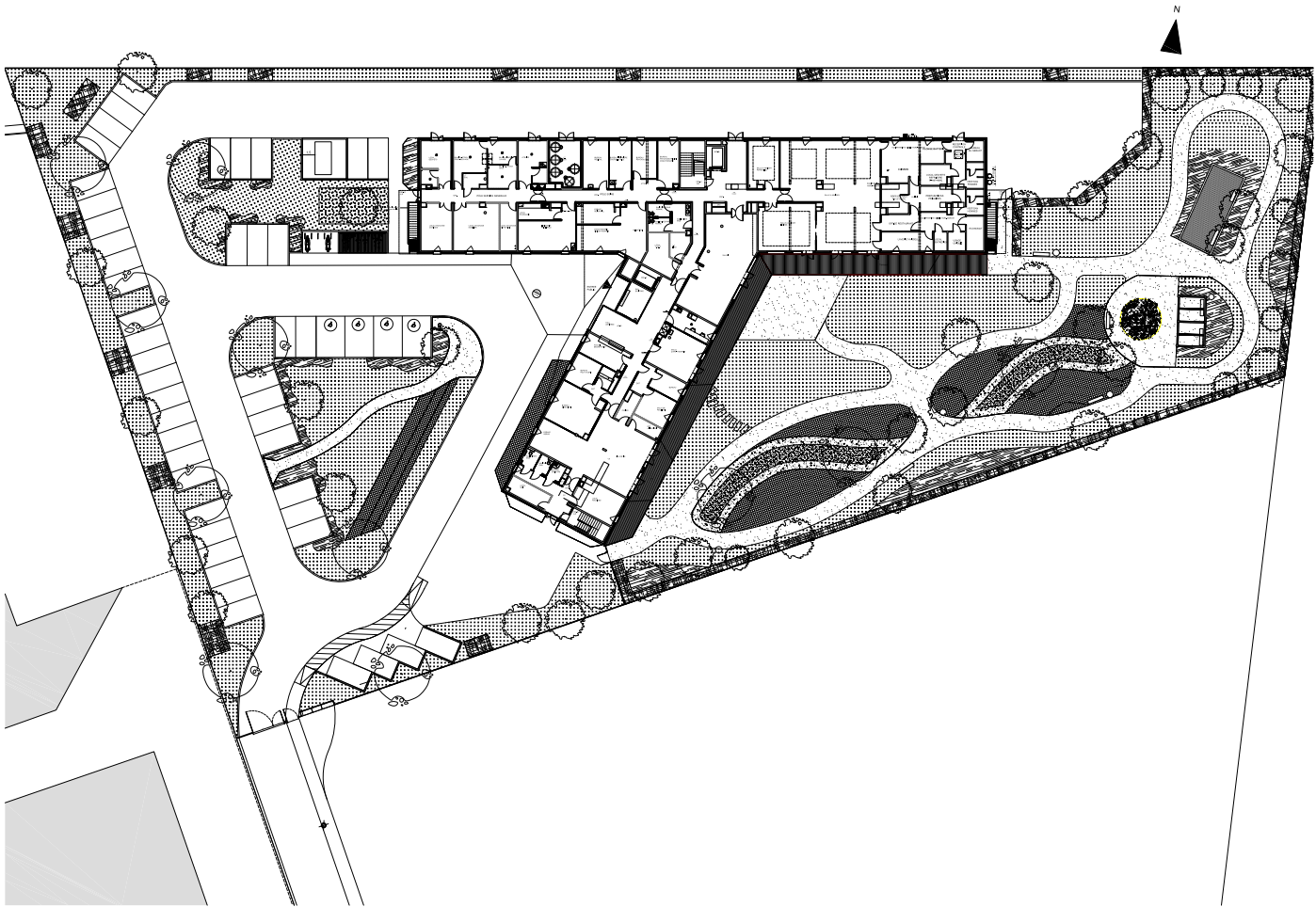
EHPAD de Morangis

Location: Morangis southern Parisian suburb, France
Architectural Design: VOUS ETES ICI Architecture
Partners: Alexandre Becker (Partner in Charge) – Julien Paulré – Paul Pflughaupt (Architects)
Project Leader: Lise Bronsart (Architect)
Team: Fabien Compan – Luan Cavaleiro – Jérémie Ghezzi – Romain Saccoccio
Total Plot Area: 9,950 m²
Photography: 11H45

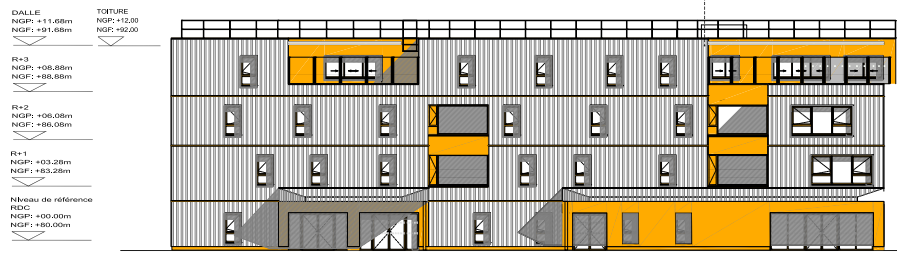
The building is constructed on 4 levels and is based on a “Y” shaped plan. The building occupies the site as follows: 1) The main public entrance is located where the “Y” strands connect ; 2) The north facade is dedicated to service, deliveries and employee’s entrance ; 3) The south facade is generously opened towards the residents’ private park. The living areas as well as the main activities areas (restaurant, salon) are developed around the private gardens. These areas benefit from the view and easy dedicated access to the gardens. The gardens include therapeutically themed spaces as well as more traditional paths around flower beds and a rose garden.

The rooms on the ground and first floors are dedicated to classical geriatrics residents, the rooms are disposed into 6 units of 13 rooms each. The second floor is dedicated to patients suffering from Alzheimer’s disease or other similar neurological disorders. The second floor has two large terraces easily accessible to the residents. These terraces, widely orientated towards the park, are treated as a prolongation of the inner spaces. The third floor includes vast dedicated spaces for specialized activities, rest and well-being. All the floors are accessible from the central node intersecting all of the buildings functions and patient units.

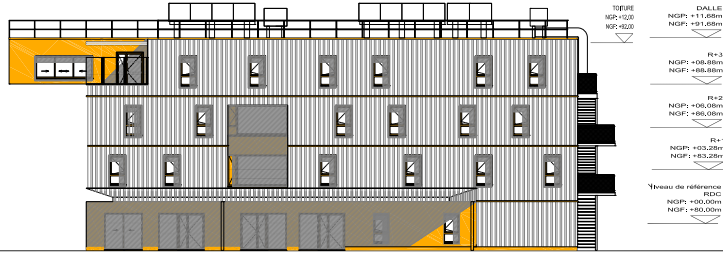
One of the base lines of this project is to offer, all through the construction and all its sleeping units, framed views. Each unit has a main gathering area for activities or meals as well as a smaller area placed in front of loggia or suspended gardens. All these small areas include large windows and quality framed views.



FACADE SUD 1 - JARDIN



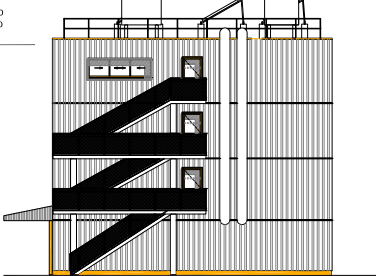
FACADE SUD 2 - JARDIN



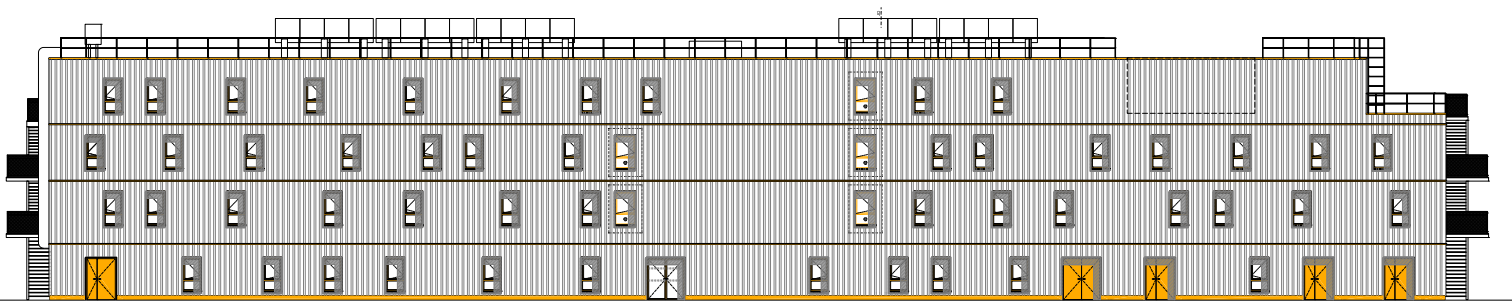
FACADE OUEST - ENTREE PRINCIPALE



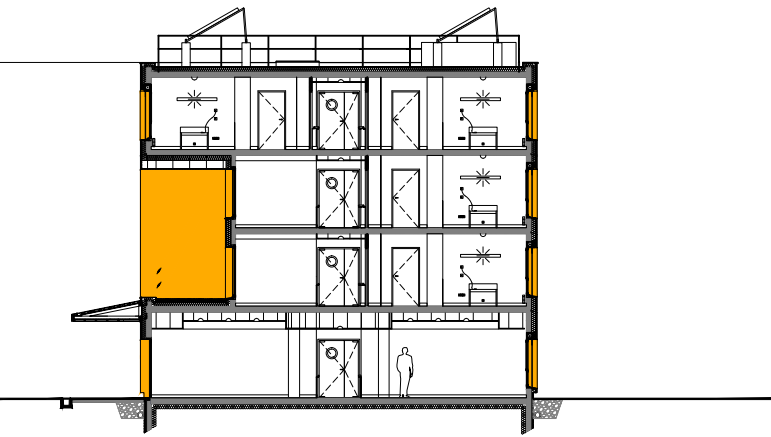
PIGNON CÔTE JARDIN



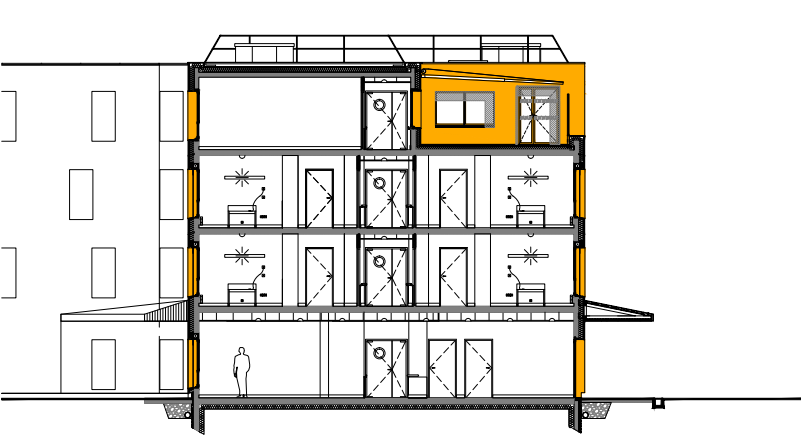
FACADE NORD - ACCES SECONDAIRES



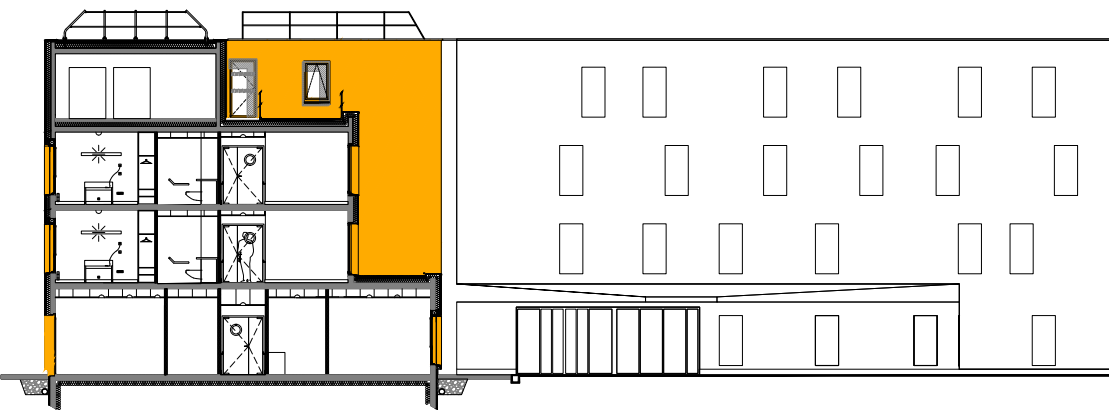
COUPE 11'



COUPE 33'



COUPE 22'





The corridors, usually blind and suffocating spaces, always include wider spaces with outside views, which allow our elders to move around at their pace towards lights and rest areas in the buildings circulations. They may easily meet and chat with fellow residents without having a difficult and stressing path to do so. On an individual's point of view, the building rooms were designed differently with windows offering distant views of the country side and treated as hotel rooms more than hospital rooms. All the windows designed with a glass panel to the floor allowing bedded residents to have a view.

This envelope covering the building is made out of Siberian larch wood; these wooden boards are warm and comforting. The outer skin vibrates according to

the sun and time of the day. The larch boards are top quality solid wood, they are butted together to prevent deformation and to remove defaults. Wooden awnings extend the facades skin away from the building creating shelter from the sun and rain and protecting the ground floor's salons and restaurants.

This bright and lively color (warm orange to yellow), stimulating without being aggressive, is also the one used for the window and door frames of the facades found under the awnings and in the bedrooms. As one approaches the building and passes below the awnings towards the yellow coating, as he is welcomed, will feel and understand the building's harmony. One will easily understand how the building works and how it is connected to its natural and urban surroundings.

